

Attachment B

**CEQA Statutory and Categorical Exemptions**

<b>Subprojects</b>	<b>CEQA Exemptions</b>
<p><b>Subproject 1:</b> Embarcadero Corridor (South of Clay thru Oak) - Surface Improvements</p> <p>(Potential Construction)</p>	<p><b>Public Resources Code § 21080.25(b)(1)</b> exempts from CEQA “[p]edestrian and bicycle facilities that improve safety, access, or mobility, including new facilities, within the public right-of-way.” Here, Subproject 1 consists of improvements, including a dedicated space for a multiuse trails, to improve the safety and operational efficiencies of the movement of persons and goods along this congested corridor. Thus, Subproject 1 is statutorily exempt from CEQA pursuant to Public Resources Code § 21080.25(b)(1).</p> <p><b>Public Resources Code § 21080.20</b> applies to “an active transportation plan, a pedestrian plan, or a bicycle transportation plan for the restriping of streets and highways, bicycle parking and storage, signal timing to improve street and highway intersection operations, and the related signage for bicycles, pedestrians, and vehicles.” Subproject 1 is an active transportation plan, a pedestrian plan, and bicycle transportation plan to encourage the increased use of active modes of transportation. The dedicated space for a multiuse trail, limiting and eliminating access for motor vehicles, installing fencing and barriers to better define the railroad operating right of way, and modernizing the at grade railroad crossings will increase safety and mobility for non-motorized users by separating modes of travel so that railroad operators, motor vehicle drivers, pedestrians, cyclists, and other mobility users have defined areas of use/operations. Thus, Subproject 1 is statutorily exempt pursuant to Public Resources Code § 21080.20.</p> <p><b>State CEQA Guidelines § 15301(c) [Class 1 – Existing Facilities]</b> “consists of the operation, repair, maintenance, permitting, leasing, licensing, or minor alteration of existing public or private structures, facilities, mechanical equipment, or topographical features, involving negligible or no expansion of existing or former use.” This includes existing highways and streets, bicycle and pedestrian trails, and similar facilities (such as road grading for the purpose of public safety, and other alterations such as the addition of bicycle facilities, transit improvements such as bus lanes, pedestrian crossings, street trees, and other similar alterations that do not create additional automobile lanes). Subproject 1 will result in a negligible or no expansion of an existing or former use. Instead, the project will involve minor alterations to a multiuse trail and railroad crossings that limit or eliminate access for motor vehicles to improve</p>

Subprojects	CEQA Exemptions
	<p>safety and operational efficiencies for the existing corridor. Thus, Subproject 1 is exempt pursuant to Class 1.</p> <p><b>State CEQA Guidelines § 15302 [Class 2 – Replacement and Reconstruction]</b> “consists of replacement or reconstruction of existing structures and facilities where the new structure will be located on the same site as the structure replaced and will have substantially the same purpose and capacity as the structure replaced.” Subproject 1 will improve and replace the existing modes of travel within this corridor. The improvements, such as the creating clearly defined areas of use/operations between railroad operations, pedestrian, and bicycle paths, will have substantially the same purpose and capacity as the existing corridor. Thus, Subproject 1 is exempt pursuant to the Class 2 exemption.</p> <p><b>State CEQA Guidelines § 15304(h) [Class 4 – Minor Alterations to Land]</b> consists of the “minor public or private alterations in the condition of land, water, and/or vegetation which do not involve removal of healthy, mature, scenic trees except for forestry and agricultural purposes”, including the creation of bicycle lanes on existing rights-of-way. Here, the proposed project will include infrastructure improvements such as a multiuse trail, as well as other improvements to the existing rights-of-way within the corridor to accommodate the increasing volume of users such as railroad operators, motor vehicle drivers, pedestrians, and cyclists. Subproject 1 will not involve the removal of healthy, mature scenic trees and thus, Subproject 1 is exempt pursuant to Class 4.</p> <p>See accompanying explanation as to why none of the exemptions under State CEQA Guidelines section 15300.2 apply.</p>
<p><b>Subproject 2:</b> Embarcadero Corridor (Market thru Clay) - Surface Improvements  (Potential Construction)</p>	<p><b>Public Resources Code § 21080.25(b)(1)</b> exempts from CEQA “[p]edestrian and bicycle facilities that improve safety, access, or mobility, including new facilities, within the public right-of-way.” Here, Subproject 2 consists of improvements, including a dedicated space for a multiuse trails, to improve the safety and operational efficiencies of the movement of persons and goods along this congested corridor. Thus, Subproject 2 is statutorily exempt from CEQA pursuant to Public Resources Code § 21080.25(b)(1).</p> <p><b>Public Resources Code § 21080.20</b> applies to “an active transportation plan, a pedestrian plan, or a bicycle transportation plan for the restriping of streets and highways, bicycle parking and storage, signal</p>

Subprojects	CEQA Exemptions
	<p>timing to improve street and highway intersection operations, and the related signage for bicycles, pedestrians, and vehicles.” Subproject 2 is an active transportation plan, a pedestrian plan, and bicycle transportation plan to encourage the increased use of active modes of transportation. The dedicated space for a multiuse trail, limiting and eliminating access for motor vehicles, installing fencing and barriers to better define the railroad operating right of way, and modernizing the at grade railroad crossings will increase safety and mobility for non-motorized users by separating modes of travel so that railroad operators, motor vehicle drivers, pedestrians, cyclists, and other mobility users have defined areas of use/operations. Thus, Subproject 2 is statutorily exempt from CEQA pursuant to Public Resources Code § 21080.20.</p> <p><b>State CEQA Guidelines § 15301(c) [Class 1 – Existing Facilities]</b> “consists of the operation, repair, maintenance, permitting, leasing, licensing, or minor alteration of existing public or private structures, facilities, mechanical equipment, or topographical features, involving negligible or no expansion of existing or former use.” This includes existing highways and streets, bicycle and pedestrian trails, and similar facilities (such as road grading for the purpose of public safety, and other alterations such as the addition of bicycle facilities, transit improvements such as bus lanes, pedestrian crossings, street trees, and other similar alterations that do not create additional automobile lanes). Subproject 2 will result in a negligible or no expansion of an existing or former use. Instead, the project will involve minor alterations to a multiuse trail and railroad crossings that limit or eliminate access for motor vehicles to improve safety and operational efficiencies for the existing corridor. Thus, Subproject 2 is exempt pursuant to Class 1.</p> <p><b>State CEQA Guidelines § 15302 [Class 2 – Replacement and Reconstruction]</b> “consists of replacement or reconstruction of existing structures and facilities where the new structure will be located on the same site as the structure replaced and will have substantially the same purpose and capacity as the structure replaced.” Subproject 2 will improve and replace the existing modes of travel within this corridor. The improvements, such as the creating clearly defined areas of use/operations between railroad operations, pedestrian, and bicycle paths, will have substantially the same purpose and capacity as the existing corridor. Thus, Subproject 2 is exempt pursuant to Class 2.</p> <p><b>State CEQA Guidelines § 15304(h) [Class 4 – Minor Alterations to Land]</b> consists of the “minor public or private alterations in the condition of land, water, and/or vegetation which do not involve</p>

Subprojects	CEQA Exemptions
	<p>removal of healthy, mature, scenic trees except for forestry and agricultural purposes”, including the creation of bicycle lanes on existing rights-of-way. Here, the proposed project will include infrastructure improvements such as a multiuse trail, as well as other improvements to the existing rights-of-way within the corridor to accommodate the increasing volume of users such as railroad operators, motor vehicle drivers, pedestrians, and cyclists. Subproject 2 will not involve the removal of healthy, mature scenic trees, and thus falls under the Class 4 exemption.</p> <p>See accompanying explanation as to why none of the exemptions under State CEQA Guidelines section 15300.2 apply.</p>
<p><b>Subproject 3:</b> Railroad Grade Separation Feasibility Study  (Planning/Design Work)</p>	<p><b>State CEQA Guideline § 15262</b> – CEQA does not apply to feasibility or planning studies that will not have a legally binding effect on later activities and so local agency feasibility or planning studies for possible future actions that that the local agency, board, or commission has not approved, adopted, or funded. Here, Subproject 3 is only a feasibility study and so is exempt from CEQA as it will not have a legally binding effect on later activities.</p>
<p><b>Subproject 4:</b> Overweight &amp; Emergency Vehicle Corridor between Middle Harbor Road and Embarcadero/Market  (Potential Construction)</p>	<p><b>State CEQA Guidelines §15301(c) [Class 1 – Existing Facilities]</b> “consists of the operation, repair, maintenance, permitting, leasing, licensing, or minor alteration of existing public or private structures, facilities, mechanical equipment, or topographical features, involving negligible or no expansion of existing or former use.” This includes existing highways and streets, bicycle and pedestrian trails, and similar facilities (such as road grading for the purpose of public safety, and other alterations such as the addition of bicycle facilities, transit improvements such as bus lanes, pedestrian crossings, street trees, and other similar alterations that do not create additional automobile lanes). Subproject 4 will involve the design and relocation of an existing permitted heavy weight vehicle route. The new roadway will also provide secondary emergency vehicle access to the waterfront, and will result in a negligible or no expansion of an existing use. Subproject 4 falls within the scope of the Class 1 exemption.</p>

Subprojects	CEQA Exemptions
	<p><b>State CEQA Guidelines § 15302 [Class 2 – Replacement and Reconstruction]</b> “consists of replacement or reconstruction of existing structures and facilities where the new structure will be located on the same site as the structure replaced and will have substantially the same purpose and capacity as the structure replaced.” The proposed project consists of the replacement and relocation of an existing permitted heavy weight vehicle route within the same corridor. The new permitted heavy weight vehicle route will have substantially the same purpose and capacity as the route replaced. Subproject 4 is therefore exempt pursuant to Class 2.</p> <p><b>State CEQA Guidelines § 15304(h) [Class 4 – Minor Alterations to Land]</b> consists of the “minor public or private alterations in the condition of land, water, and/or vegetation which do not involve removal of healthy, mature, scenic trees except for forestry and agricultural purposes”. Here, the proposed project will include the relocation of an existing permitted heavy weight vehicle route and emergency vehicle access roadway, which will involve minor alterations to the land. No healthy mature scenic trees will be removed. Subproject 4 therefore falls within the parameters of Class 4.</p> <p>See accompanying explanation as to why none of the exemptions under State CEQA Guidelines section 15300.2 apply.</p>
<p><b>Subproject 5:</b> Adeline Street Corridor Traffic Improvements (I-880 Off-ramp to 3rd St)</p> <p>(Planning/Design Work)</p>	<p><b>State CEQA Guideline § 15262</b> – CEQA does not apply to feasibility or planning studies that will not have a legally binding effect on later activities and so local agency feasibility or planning studies for possible future actions that that the local agency, board, or commission has not approved, adopted, or funded. Here, Subproject 5 is only a design and planning study and so is exempt from CEQA as it will not have a legally binding effect on later activities.</p>
<p><b>Subproject 6:</b> Crash Analysis Improvements (Brush at 17th and 18th,</p>	<p><b>State CEQA Guideline § 15262</b> – CEQA does not apply to feasibility or planning studies that will not have a legally binding effect on later activities and so local agency feasibility or planning studies for possible future actions that that the local agency, board, or commission has not approved, adopted, or</p>

Subprojects	CEQA Exemptions
Castro/5th, MLK/17th)  (Planning/Design Work)	funded. Here, Subproject 6 is only a design and planning study and so is exempt from CEQA as it will not have a legally binding effect on later activities.
<b>Subproject 7:</b> Market Street Corridor Streetscape Improvements (3rd St. to 7th St.)  (Planning/Design Work)	<b>State CEQA Guideline § 15262</b> – CEQA does not apply to feasibility or planning studies that will not have a legally binding effect on later activities and so local agency feasibility or planning studies for possible future actions that that the local agency, board, or commission has not approved, adopted, or funded. Here, Subproject 7 is only a design and planning study and so is exempt from CEQA as it will not have a legally binding effect on later activities.
<b>Subproject 8:</b> 3rd Street Corridor Streetscape Improvements (Market to Franklin)  (Planning/Design Work)	<b>State CEQA Guideline § 15262</b> – CEQA does not apply to feasibility or planning studies that will not have a legally binding effect on later activities and so local agency feasibility or planning studies for possible future actions that that the local agency, board, or commission has not approved, adopted, or funded. Here, Subproject 8 is only a design and planning study and so is exempt from CEQA as it will not have a legally binding effect on later activities.
<b>Subproject 9:</b> MLK Corridor Streetscape Improvements (2nd St. to 12th St.)	<b>Public Resources Code § 21080.25(b)(1)</b> exempts from CEQA “[p]edestrian and bicycle facilities that improve safety, access, or mobility, including new facilities, within the public right-of-way.” Here, Subproject 9 will improve the local thoroughfare that accommodates low-stress mobility for pedestrians, bicyclists, transit users and motor vehicles. Thus, Subproject 9 is statutorily exempt from CEQA pursuant to Public Resources Code § 21080.25(b)(1).

Subprojects	CEQA Exemptions
(Potential Construction)	<p><b>Public Resources Code § 21080.20</b> applies to “an active transportation plan, a pedestrian plan, or a bicycle transportation plan for the restriping of streets and highways, bicycle parking and storage, signal timing to improve street and highway intersection operations, and the related signage for bicycles, pedestrians, and vehicles.” Subproject 9 is an active transportation plan, a pedestrian plan, and bicycle transportation plan to encourage local pedestrians and bicyclists to use this low-stress corridor along Martin Luther King Jr. Way which will reduce local trips along important truck routes to/from the Port of Oakland. Subproject 9 is statutorily exempt pursuant to Public Resources Code § 21080.20.</p> <p><b>State CEQA Guidelines § 15301(c) [Class 1 – Existing Facilities]</b> “consists of the operation, repair, maintenance, permitting, leasing, licensing, or minor alteration of existing public or private structures, facilities, mechanical equipment, or topographical features, involving negligible or no expansion of existing or former use.” This includes existing highways and streets, bicycle and pedestrian trails, and similar facilities (such as road grading for the purpose of public safety, and other alterations such as the addition of bicycle facilities, transit improvements such as bus lanes, pedestrian crossings, street trees, and other similar alterations that do not create additional automobile lanes). Subproject 9 will not result in an expansion of an existing or former use. Instead, the project will involve minor improvements to the existing corridor along Martin Luther King Jr. Way to accommodate low-stress mobility for pedestrians, bicyclists, transit users, and motor vehicles. Subproject 9 therefore is exempt pursuant to Class 1.</p> <p><b>State CEQA Guidelines § 15302 [Class 2 – Replacement and Reconstruction]</b> “consists of replacement or reconstruction of existing structures and facilities where the new structure will be located on the same site as the structure replaced and will have substantially the same purpose and capacity as the structure replaced.” Subproject 9 will reconstruct the corridor along Martin Luther King Jr. Way to improve this local thoroughfare, which will be located on the same site, and will have substantially the same purpose and capacity. Subproject 9 falls within the scope of the Class 2 exemption.</p> <p><b>State CEQA Guidelines § 15304(h) [Class 4 – Minor Alterations to Land]</b> consists of the “minor public or private alterations in the condition of land, water, and/or vegetation which do not involve removal of healthy, mature, scenic trees except for forestry and agricultural purposes”, including the creation of bicycle lanes on existing rights-of-way. Here, the proposed designs will improve the local</p>

Subprojects	CEQA Exemptions
	<p>thoroughfare with minor public alterations in the condition of land. Subproject 9 will not involve the removal of healthy, mature scenic trees and is therefore exempt pursuant to Class 4.</p> <p>See accompanying explanation as to why none of the exemptions under State CEQA Guidelines section 15300.2 apply.</p>
<p><b>Subproject 10:</b> 7th Street Corridor Streetscape Improvements (Mandela to MLK - including Brush/Castro)</p> <p>(Potential Construction)</p>	<p><b>Public Resources Code § 21080.25(b)(1)</b> exempts from CEQA “[p]edestrian and bicycle facilities that improve safety, access, or mobility, including new facilities, within the public right-of-way.” Here, Subproject 10 consists of improvements to install new protected bike lanes, modify existing traffic signals, install new fiber optic cabling to interconnect all traffic signals on the corridor, potentially install a new traffic signal, provide additional lighting, improve sidewalks and curb ramps, and install new street trees. These will improve multi-modal safety and accessibility by separating bicyclists from truck, transit, and vehicular traffic, improving intersection safety for all modes, especially pedestrians. Thus, Subproject 10 is statutorily exempt from CEQA pursuant to Public Resources Code § 21080.25(b)(1).</p> <p><b>Public Resources Code § 21080.20</b> applies to “an active transportation plan, a pedestrian plan, or a bicycle transportation plan for the restriping of streets and highways, bicycle parking and storage, signal timing to improve street and highway intersection operations, and the related signage for bicycles, pedestrians, and vehicles.” Subproject 10 is an active transportation plan, a pedestrian plan, and bicycle transportation plan to improve multi-modal safety and accessibility by separating bicyclists from truck, transit, and vehicular traffic. Subproject also improves intersection safety for all modes, especially pedestrians. Subproject 10 is statutorily exempt pursuant to Public Resources Code § 21080.20.</p> <p><b>State CEQA Guidelines § 15301(c) [Class 1 – Existing Facilities]</b> “consists of the operation, repair, maintenance, permitting, leasing, licensing, or minor alteration of existing public or private structures, facilities, mechanical equipment, or topographical features, involving negligible or no expansion of existing or former use.” This includes existing highways and streets, bicycle and pedestrian trails, and similar facilities (such as road grading for the purpose of public safety, and other alterations such as the addition of bicycle facilities, transit improvements such as bus lanes, pedestrian crossings, street trees, and other similar alterations that do not create additional automobile lanes). Here, Subproject 10 will include the repair, maintenance, and minor alteration to the existing corridor between Mandela Parkway and</p>



Subprojects	CEQA Exemptions
	<p>Martin Luther King Jr. Way. There will be negligible or no expansion of existing or former use. Subproject 10 therefore is exempt pursuant to Class 1.</p> <p><b>State CEQA Guidelines § 15302 [Class 2 – Replacement and Reconstruction]</b> “consists of replacement or reconstruction of existing structures and facilities where the new structure will be located on the same site as the structure replaced and will have substantially the same purpose and capacity as the structure replaced.” Subproject 10 will improve and replace the existing multi-modal use of the corridor. The improvements will take place on the same site as the corridor, and will have substantially the same purpose and capacity as the existing corridor. Subproject 10 falls within the scope of the Class 2 exemption.</p> <p><b>State CEQA Guidelines § 15304(h) [Class 4 – Minor Alterations to Land]</b> consists of the “minor public or private alterations in the condition of land, water, and/or vegetation which do not involve removal of healthy, mature, scenic trees except for forestry and agricultural purposes”, including the creation of bicycle lanes on existing rights-of-way. Here, the new protected bike lanes, modifications to existing traffic signals, installation of new fiber optic cabling, installation of a new traffic signal, additional lighting, improvement of sidewalks and curb ramps, and installation of new street trees are all minor public alterations in the condition of land which do not involve removal of healthy, mature scenic trees. Subproject 10 is therefore exempt pursuant to Class 4.</p> <p>See accompanying explanation as to why none of the exemptions under State CEQA Guidelines section 15300.2 apply.</p>
<p><b>Subproject 11:</b> Broadway Corridor Transit &amp; Pedestrian Improvements (2nd St. to 11th)</p> <p>(Potential Construction)</p>	<p><b>Public Resources Code § 21080.25(b)(1)</b> exempts from CEQA “[p]edestrian and bicycle facilities that improve safety, access, or mobility, including new facilities, within the public right-of-way.” Here, Subproject 11 consists of a dedicated bus only lane in each direction, modification of existing traffic signals, installation of new traffic signals, addition of new lighting, improvement of sidewalks and curb ramps, and installation of new street trees. These improvements will improve access to reliable transit along Broadway, encouraging more people to use transit and therefore eliminating vehicle trips along vital goods movement corridors to/from the Port of Oakland. Thus, Subproject 11 is statutorily exempt from CEQA pursuant to Public Resources Code § 21080.25(b)(1).</p>

Subprojects	CEQA Exemptions
	<p><b>Public Resources Code § 21080.20</b> applies to “an active transportation plan, a pedestrian plan, or a bicycle transportation plan for the restriping of streets and highways, bicycle parking and storage, signal timing to improve street and highway inter§ operations, and the related signage for bicycles, pedestrians, and vehicles.” Improvements associated with Subproject 11, such as a dedicated bus only lane, modifying existing traffic signals, installing new traffic signals, providing additional lighting, improving sidewalks and curb ramps, and installing new street trees, will encourage the increased use of transit and eliminate vehicle trips. Subproject 11 is statutorily exempt pursuant to Public Resources Code § 21080.20.</p> <p><b>State CEQA Guidelines § 15301(c) [Class 1 – Existing Facilities]</b> “consists of the operation, repair, maintenance, permitting, leasing, licensing, or minor alteration of existing public or private structures, facilities, mechanical equipment, or topographical features, involving negligible or no expansion of existing or former use.” This includes existing highways and streets, bicycle and pedestrian trails, and similar facilities (such as road grading for the purpose of public safety, and other alterations such as the addition of bicycle facilities, transit improvements such as bus lanes, pedestrian crossings, street trees, and other similar alterations that do not create additional automobile lanes). Subproject 11 will involve the repair, maintenance, and minor alterations of the existing corridor on Broadway between 2<sup>nd</sup> Street and 11<sup>th</sup> Street. The improvements will have negligible or no expansion of existing or former use. Subproject 11 therefore is exempt pursuant to Class 1.</p> <p><b>State CEQA Guidelines § 15302 [Class 2 – Replacement and Reconstruction]</b> “consists of replacement or reconstruction of existing structures and facilities where the new structure will be located on the same site as the structure replaced and will have substantially the same purpose and capacity as the structure replaced.” Subproject 11 will reconstruct certain improvements on Broadway between 2<sup>nd</sup> Street and 11<sup>th</sup> Street. Subproject will be located on the same site as the existing corridor and will have substantially the same purpose and capacity as the existing corridor. Subproject 11 thus falls within the scope of the Class 2 exemption.</p> <p><b>State CEQA Guidelines § 15304(h) [Class 4 – Minor Alterations to Land]</b> consists of the “minor public or private alterations in the condition of land, water, and/or vegetation which do not involve removal of healthy, mature, scenic trees except for forestry and agricultural purposes”, including the creation of bicycle lanes on existing rights-of-way. Here, the proposed enhancements are minor public</p>

Subprojects	CEQA Exemptions
	<p>alterations in the condition of land, including a dedicated bus only lane, modifying existing traffic signals, installing new traffic signals, and providing additional lighting. Subproject 11 will not involve the removal of healthy, mature scenic trees and is therefore exempt pursuant to Class 4.</p> <p>See accompanying explanation as to why none of the exemptions under State CEQA Guidelines section 15300.2 apply.</p>
<p><b>Subproject 12: I-880/I-980 Undercrossings</b>  (Potential Construction)</p>	<p><b>Public Resources Code § 21080.25(b)(1)</b> exempts from CEQA “[p]edestrian and bicycle facilities that improve safety, access, or mobility, including new facilities, within the public right-of-way.” Here, Subproject 12 consists of the conceptual design development, final design and construction for the I-880 and I-980 undercrossings by including accessible curb ramps and basic lighting elements along Washington Street, and enhanced features such as placemaking, enhanced lighting, and fencing or retaining walls as appropriate along all undercrossings. These improvements will encourage people to use these undercrossings to walk or bike between neighborhoods. Thus, Subproject 12 is statutorily exempt from CEQA pursuant to Public Resources Code § 21080.25(b)(1).</p> <p><b>Public Resources Code § 21080.20</b> applies to “an active transportation plan, a pedestrian plan, or a bicycle transportation plan for the restriping of streets and highways, bicycle parking and storage, signal timing to improve street and highway intersection operations, and the related signage for bicycles, pedestrians, and vehicles.” The improvements to the undercrossing locations are part of an active transportation plan, pedestrian plan, or bicycle transportation plan to encourage the increased use of bicycles and pedestrian walkways to reduce vehicle travel and congestion. Subproject 12 is statutorily exempt pursuant to Public Resources Code § 21080.20.</p> <p><b>State CEQA Guidelines § 15301(c) [Class 1 – Existing Facilities]</b> “consists of the operation, repair, maintenance, permitting, leasing, licensing, or minor alteration of existing public or private structures, facilities, mechanical equipment, or topographical features, involving negligible or no expansion of existing or former use.” This includes existing highways and streets, bicycle and pedestrian trails, and similar facilities (such as road grading for the purpose of public safety, and other alterations such as the addition of bicycle facilities, transit improvements such as bus lanes, pedestrian crossings, street trees, and other similar alterations that do not create additional automobile lanes). Subproject 12 will involve the operation, repair, maintenance, and minor alterations to the undercrossings to address safety concerns and</p>

Subprojects	CEQA Exemptions
	<p>to encourage pedestrians and bicyclists to use these undercrossings. The improvements will have negligible or no expansion of existing or former use. Subproject 12 therefore is exempt pursuant to Class 1.</p> <p><b>State CEQA Guidelines § 15302 [Class 2 – Replacement and Reconstruction]</b> “consists of replacement or reconstruction of existing structures and facilities where the new structure will be located on the same site as the structure replaced and will have substantially the same purpose and capacity as the structure replaced.” The enhancements for this project will include accessible curb ramps and basic lighting elements, and fencing or retaining walls as appropriate along the undercrossings. Subproject will be located on the same site as the existing corridor and will have substantially the same purpose and capacity as the existing corridor. Subproject 12 thus falls within the scope of the Class 2 exemption.</p> <p><b>State CEQA Guidelines § 15304(h) [Class 4 – Minor Alterations to Land]</b> consists of the “minor public or private alterations in the condition of land, water, and/or vegetation which do not involve removal of healthy, mature, scenic trees except for forestry and agricultural purposes”, including the creation of bicycle lanes on existing rights-of-way. Here, the proposed enhancements are minor public alterations in the condition of land, including accessible curb ramps, basic lighting elements, and fencing or retaining walls. Subproject 12 will not involve the removal of healthy, mature scenic trees and is therefore exempt pursuant to Class 4.</p> <p>See accompanying explanation as to why none of the exemptions under State CEQA Guidelines section 15300.2 apply.</p>
<p><b>Subproject 13:</b> Downtown Parking Management  (Planning/Design Work)</p>	<p><b>State CEQA Guideline § 15262</b> – CEQA does not apply to feasibility or planning studies that will not have a legally binding effect on later activities and so local agency feasibility or planning studies for possible future actions that that the local agency, board, or commission has not approved, adopted, or funded. Here, Subproject 13 is only a design and planning study and so is exempt from CEQA as it will not have a legally binding effect on later activities. Furthermore, parking is not an environmental impact under CEQA and therefore parking management issues as studied in this plan are not subject to CEQA. (<i>San Franciscans Upholding the Downtown Plan v City &amp; County of San Francisco</i> (2002) 102 Cal.App.4th 656, 697; Pub. Resources Code, §§ 21099(b)(3), 21099(d)(1).)</p>

Subprojects	CEQA Exemptions
<p><b>Subproject 14:</b> 8th St Sidewalk Improvements (Planning/Design Work)</p>	<p><b>State CEQA Guideline § 15262</b> – CEQA does not apply to feasibility or planning studies that will not have a legally binding effect on later activities and so local agency feasibility or planning studies for possible future actions that that the local agency, board, or commission has not approved, adopted, or funded. Here, Subproject 14 is only a design and planning study and so is exempt from CEQA as it will not have a legally binding effect on later activities.</p>
<p><b>Subproject 15:</b> 2nd Street Transit Hub &amp; Bike Gap Closure Improvements (Brush and Broadway) (Planning/Design Work)</p>	<p><b>State CEQA Guideline § 15262</b> – CEQA does not apply to feasibility or planning studies that will not have a legally binding effect on later activities and so local agency feasibility or planning studies for possible future actions that that the local agency, board, or commission has not approved, adopted, or funded. Here, Subproject 15 is only a design and planning study and so is exempt from CEQA as it will not have a legally binding effect on later activities.</p>

**California State Transportation Agency Project Supplement No. 3  
California Environmental Quality Act**

**Exceptions to Categorical Exemptions Review**

With regard to Subprojects 1, 2, 4, 9, 10, 11, and 12, which the Port of Oakland has determined to be categorically exempt, the following provides a determination under Section 15300.2 of the *State CEQA Guidelines*, which provides exceptions to the identified categorical exemptions, and a brief assessment of the *State CEQA Guidelines* Appendix G Initial Study Checklist resource topics that are applicable to the project (under “Exceptions to Categorical Exemptions” Item C). The *State CEQA Guidelines* list the following exceptions to the Categorical Exemptions in Article 19 (see Section 15300.2). In the discussion below, each subsection (in italics) is followed by an explanation of why these exceptions do not apply to all seven proposed Subprojects identified in the California State Transportation Agency Project Supplement No. 3 (Proposed Projects). Refer to **Figures 1 to 7** for approximate locations of the Proposed Projects.

<b>State CEQA Guidelines § 15300.2 Exceptions to Categorical Exemptions</b>	<b>The exceptions do not apply to Subprojects 1, 2, 4, 9, 10, 11, and 12</b>
<p><i>(a) Location. Classes 3, 4, 5, 6, and 11 are qualified by consideration of where the project is to be located – a project that is ordinarily insignificant in its impact on the environment may in a particularly sensitive environment be significant. Therefore, these classes are considered to apply in all instances, except where the project may impact on an environmental resource of hazardous or critical concern where designated, precisely mapped, and officially adopted pursuant to law by federal, state, or local agencies.</i></p>	<p>The Proposed Projects’ sites do not include any federal, state, or local precisely mapped areas of hazardous or critical concern. The Proposed Projects therefore will not impact an environmental resource of hazardous or critical concern.</p>
<p><i>(b) Cumulative Impact. All exemptions for these classes are inapplicable when the cumulative impact of successive projects of the same type in the same place, over time is significant.</i></p>	<p>There are no projects either approved or under construction in immediate proximity (“of the same type in the same place”) to the Proposed Projects. The Proposed Projects therefore will not have significant cumulative impacts of successive projects of the same type in the same place.</p>
<p><i>(c) Significant Effect. A categorical exception shall not be used for an activity where there is a reasonable possibility that the activity will have</i></p>	<p>For a project to have a significant impact to the environment due to unusual circumstances, substantial evidence must show the project would have a significant effect on the environment, or the project is unusual because it has some feature, such</p>

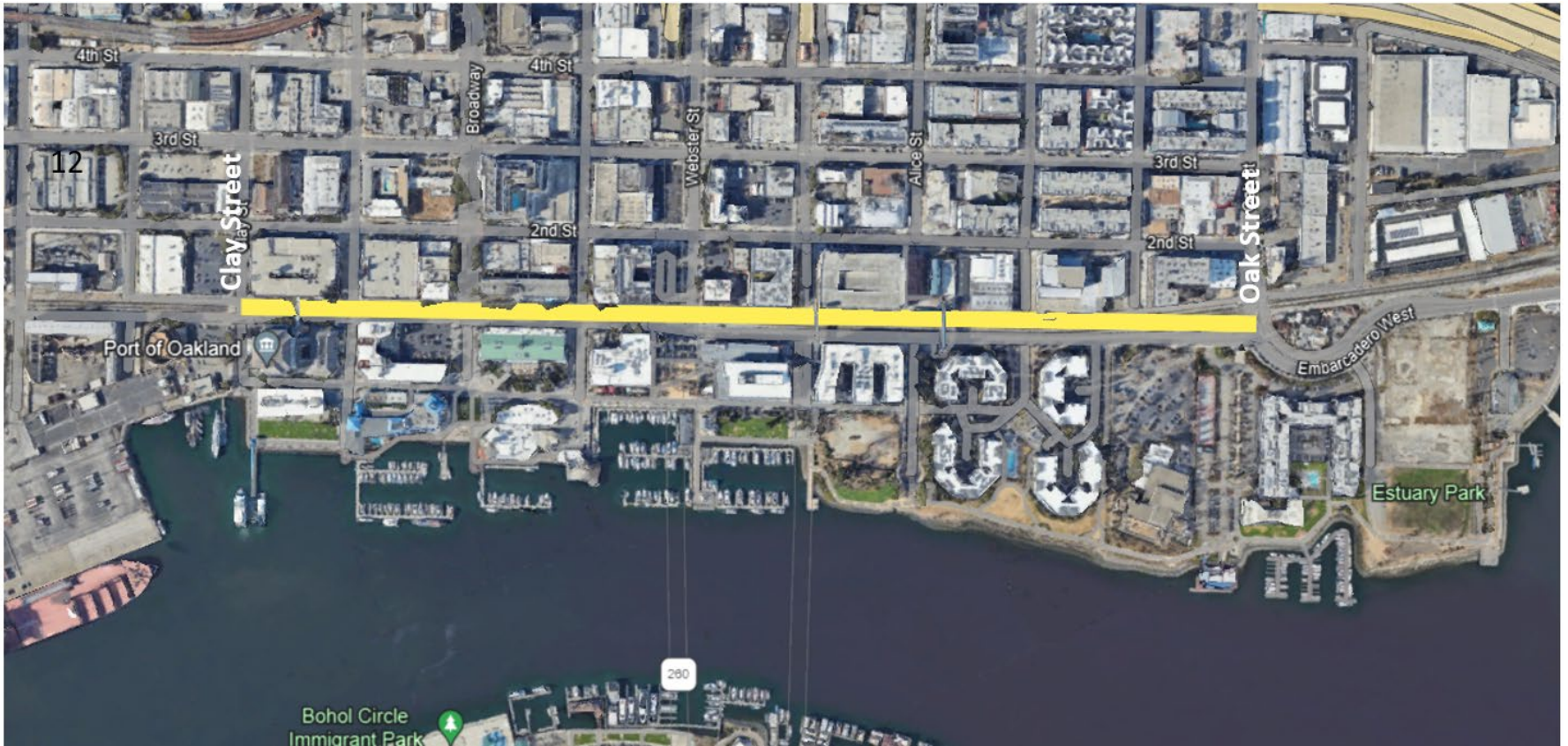
<p><i>a significant effect on the environment due to unusual circumstances.</i></p>	<p>as its size or location, that distinguishes it from other projects that would be similarly exempt, and there is a reasonable possibility of a significant effect due to that unusual circumstance.</p> <p>The Proposed Projects would be consistent with applicable land use and zoning designations for the Proposed Projects' sites and surrounding area. The Proposed Projects would therefore be consistent with the type and intensity of development anticipated in this area. Moreover, the Proposed Projects are subject to applicable local, State, and/or federal regulations and would not result in significant impacts to the environment. Accordingly, the Proposed Projects would not have a significant effect on the environment due to unusual circumstances and therefore are not subject to the Significant Effect Exception (Section 15300.2(c)).</p>
<p><i>(d) Scenic Highways. A categorical exemption shall not be used for a project which may result in damage to scenic resources, including but not limited to, trees, historic buildings, rock outcroppings, or similar resources, within a highway officially designated as a state scenic highway.</i></p>	<p>The Proposed Projects would not result in any changes or damage to trees, historic buildings, rock outcroppings, or similar resources within a highway officially designated as a state scenic highway. No existing scenic rock outcroppings are within Proposed Projects' limits or any structures that would be eligible for listing as historic resources. The Proposed Projects would not result in any damage to scenic resources.</p>
<p><i>(e) Hazardous Waste Sites. A categorical exemption shall not be used for a project located on a site which is included on any list compiled pursuant to Section 65962.5 of the Government Code.</i></p>	<p>Hazardous materials sites compiled pursuant to Government Code Section 65962.5 are listed on the "Cortese List" (named after the Legislator who authored the legislation that enacted it), which is maintained by the California Department of Toxic Substances Control. The Proposed Projects' sites are not on any list of hazardous material sites compiled pursuant to Government Code Section 65962.5 and therefore the Proposed Projects are not subject to the Hazardous Waste Sites Exception (Section 15300.2(c)).</p>
<p><i>(f) Historical Resources. A categorical exemption shall not be used for a project which may cause a substantial adverse change in the significance of a historical resource.</i></p>	<p>To be considered a historical resource pursuant to State CEQA Guidelines Section 15064.5, the property must be associated with events that have made a significant contribution to the broad patterns of local or regional history or the cultural heritage of California or the United States; be associated with the lives of persons important to local, California or national history; embody the distinctive characteristics of a type, period, region, or method of construction or represents the work of a master or possesses high artistic values; or have yielded, or have the potential to yield, information important to the prehistory or history of the local area, California, or the nation. In addition, the City has officially designated five buildings, structures, or</p>

sites within the downtown area as historic landmarks; none of these are in or adjacent to the Proposed Projects' sites.

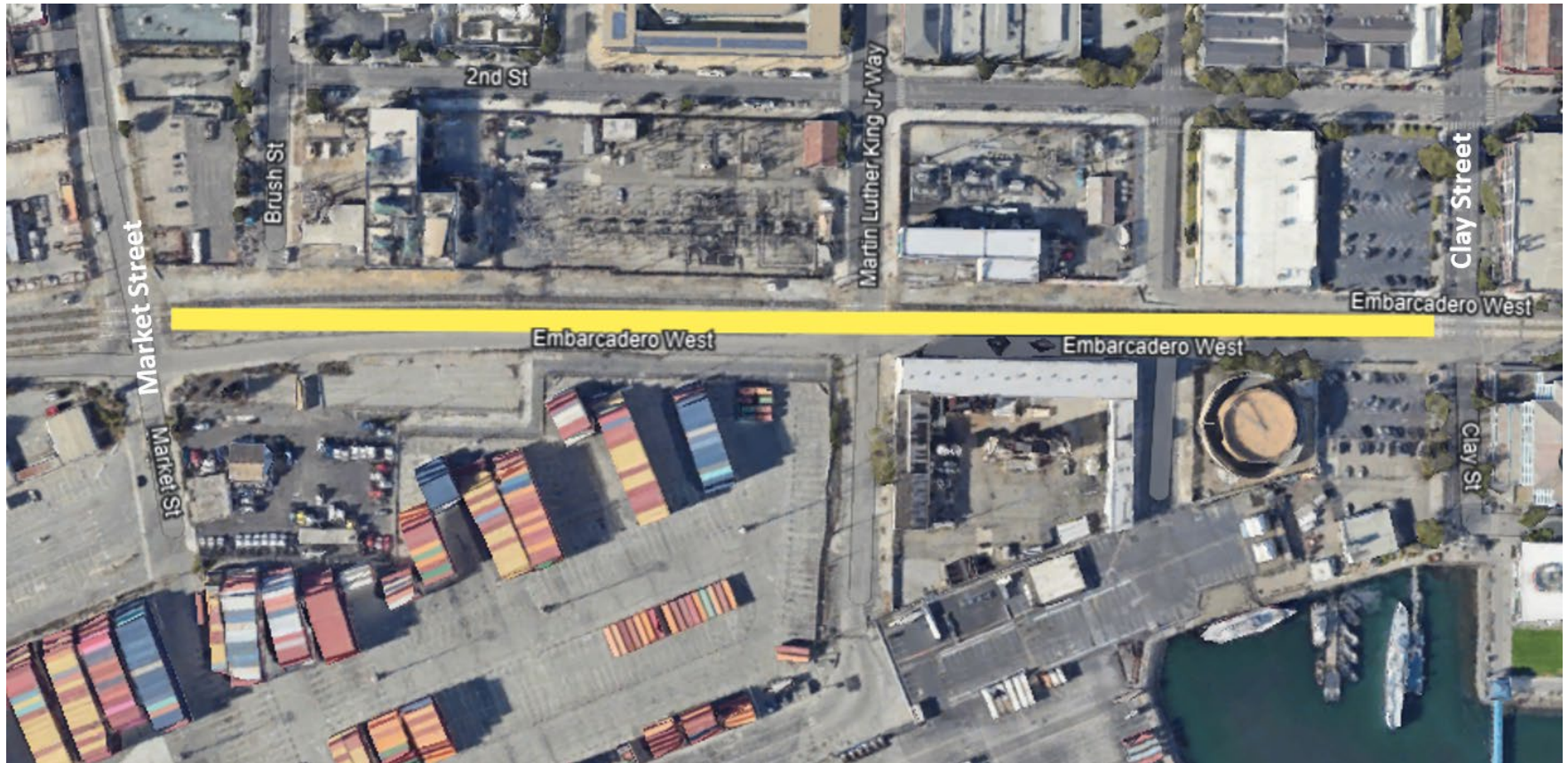
The Proposed Projects' sites do not contain any structures that meet any of the specified criteria for significance in order to be considered a historical resource pursuant to State CEQA Guidelines Section 15064.5. Therefore, the Proposed Projects are not subject to the Historical Resources Exception (Section 15300.2(e)).



Figure 1: Subproject 1 – Reconstructing Embarcadero West Between Oak Street to Clay Street (highlighted in yellow)



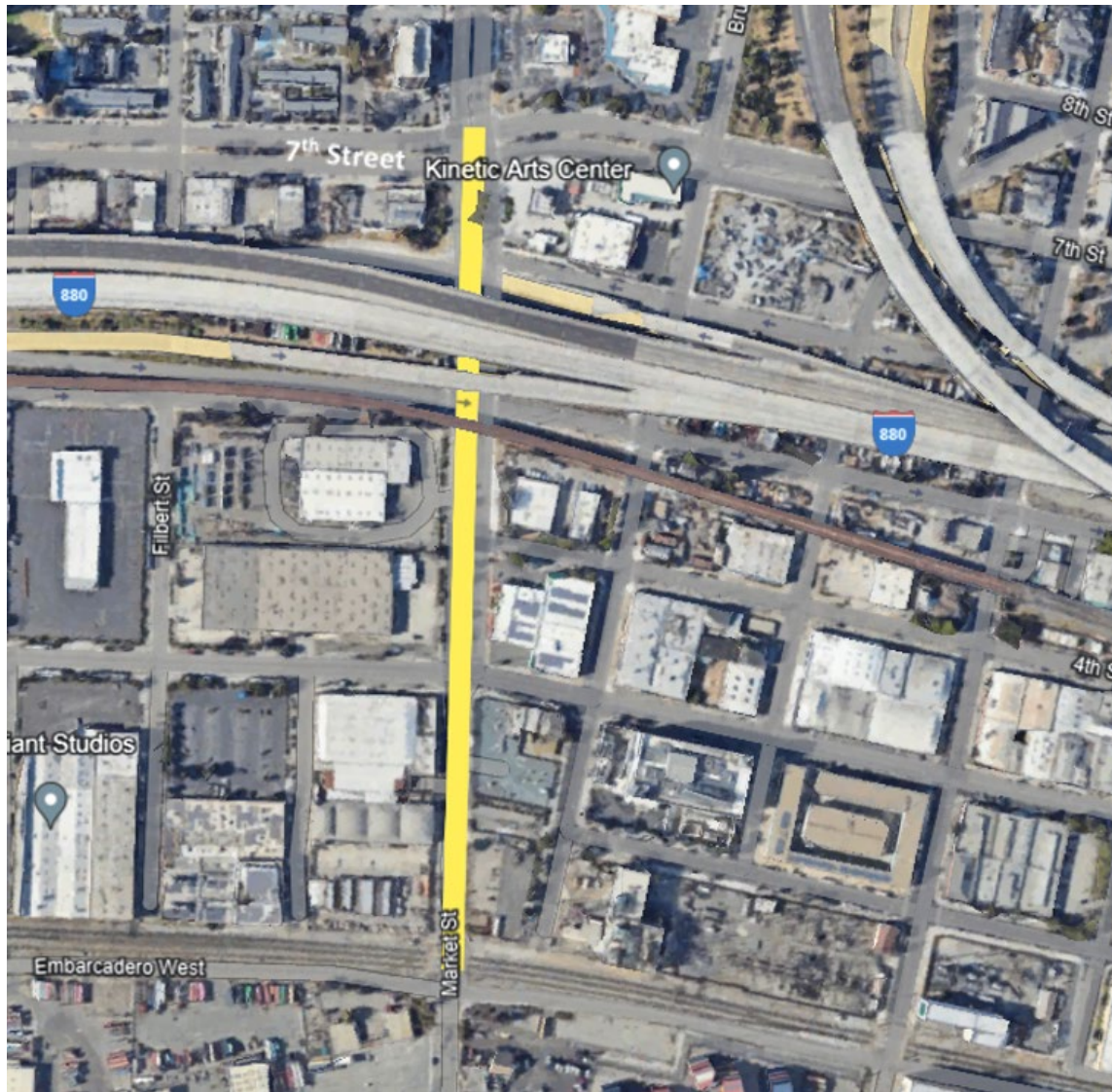
**Figure 2: Subproject 2 – Reconstructing Embarcadero West between Clay Street to Market Street (highlighted in yellow)**



**Figure 3: Subproject 4 – Install a New Permitted Heavy Weight Vehicle Route and Emergency Vehicle Access Roadway**



Figure 4: Subproject 7 – Development of Market Street Corridor



**Figure 5: Subproject 9 – Construction of Martin Luther King, Jr. Way Corridor**

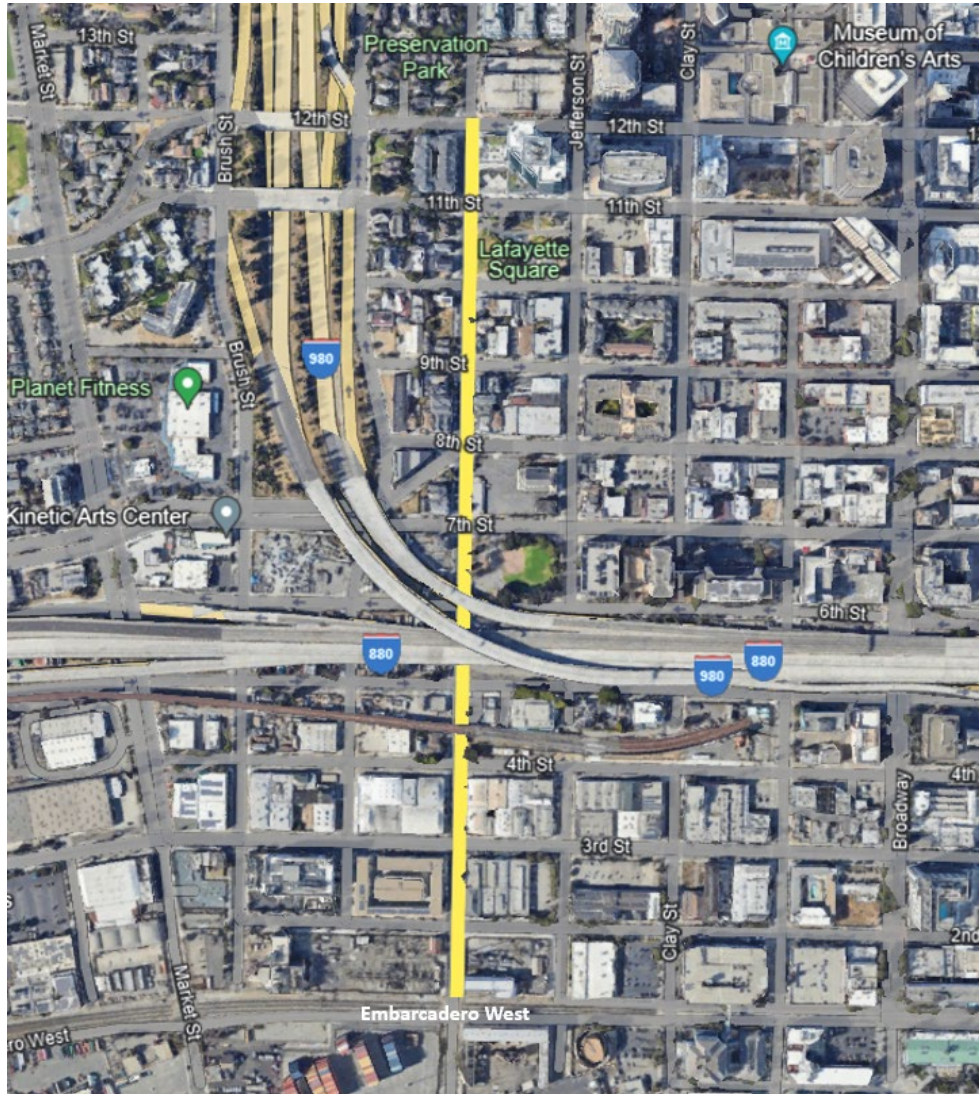
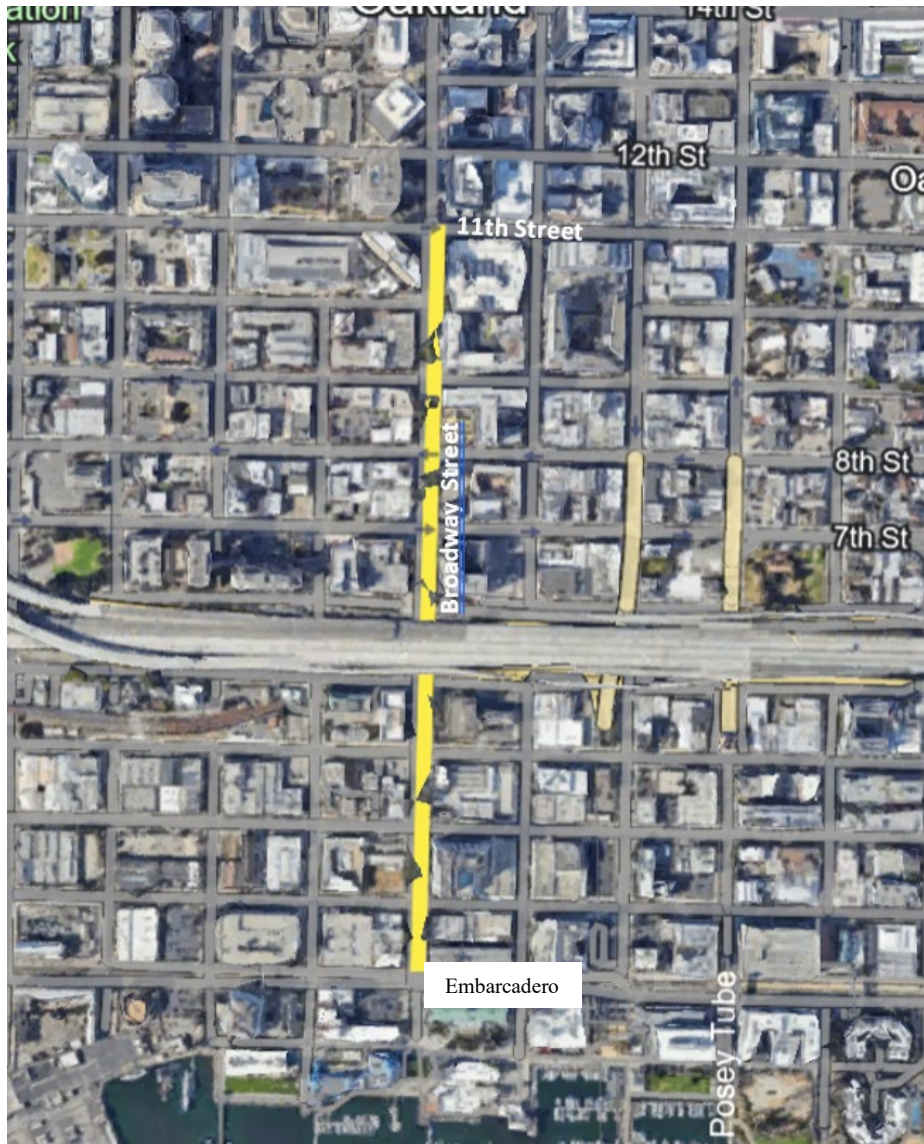


Figure 6: Subproject 11 – Improve the Broadway Transit Corridor



**Figure 7: Subproject 12 – Construction for the 1-880 and 1-980 undercrossings at Washington Street, Markey Street, Martin Luther King Jr. Way, Broadway, and 7<sup>th</sup> Street Corridors**

