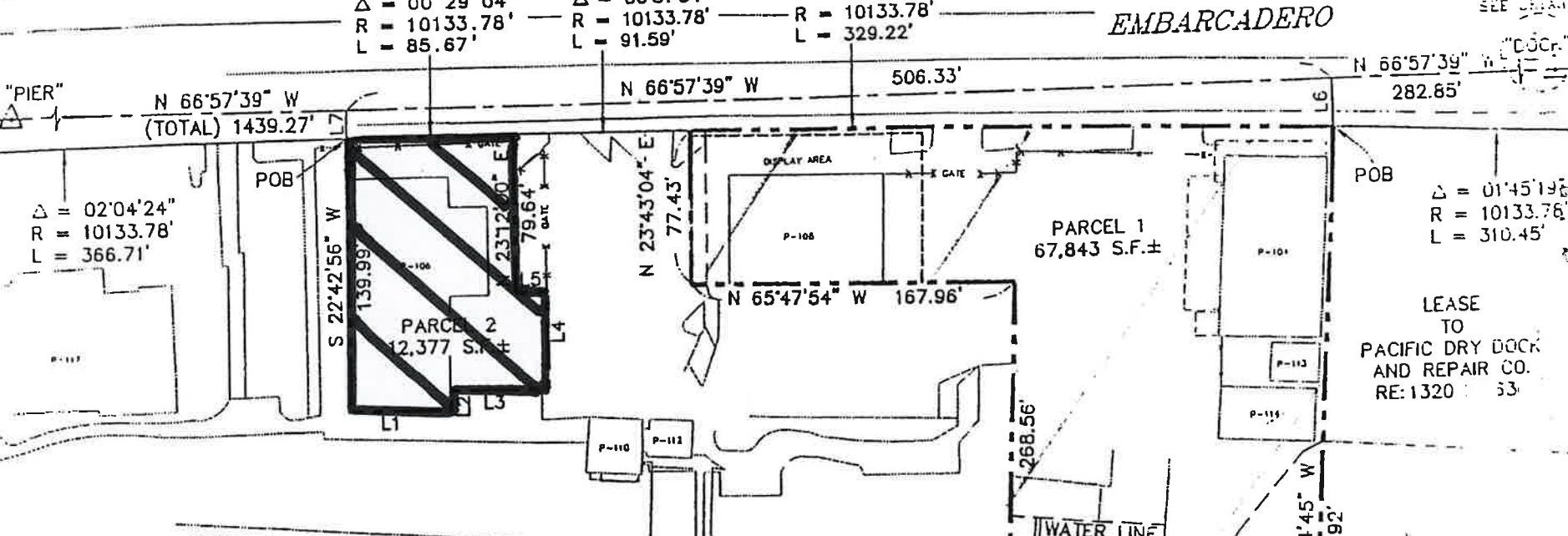
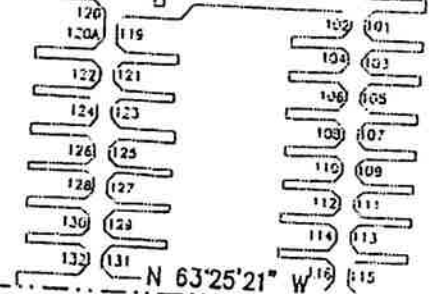


EMBARCADERO



LINE	DIRECTION	DISTANCE
L1	S 67°17'04" E	51.00'
L2	N 22°42'56" E	10.00'
L3	S 67°17'04" E	50.00'
L4	N 22°42'56" E	50.00'
L5	N 67°17'04" W	16.00'
L6	S 23°02'21" W	23.51'
L7	S 23°02'21" W	13.72'



NOTE: BEARINGS AND DISTANCES ARE BASED UPON THE CALIFORNIA COORDINATE SYSTEM OF 1983, ZONE III. MULTIPLY HEREON SHOWN DISTANCES BY 1.0000706 TO OBTAIN GROUND DISTANCES.

PORT OF OAKLAND

TITLE  
LEASE AREA

DRAWN BY: DTB	Friedl Bk 55014
CHECKED BY: FAR	Wlk Crs 20000
SCALE: 1" = 80'	Date Filed 06/06/96
DATE: 11/06/96	Rev. No. 0