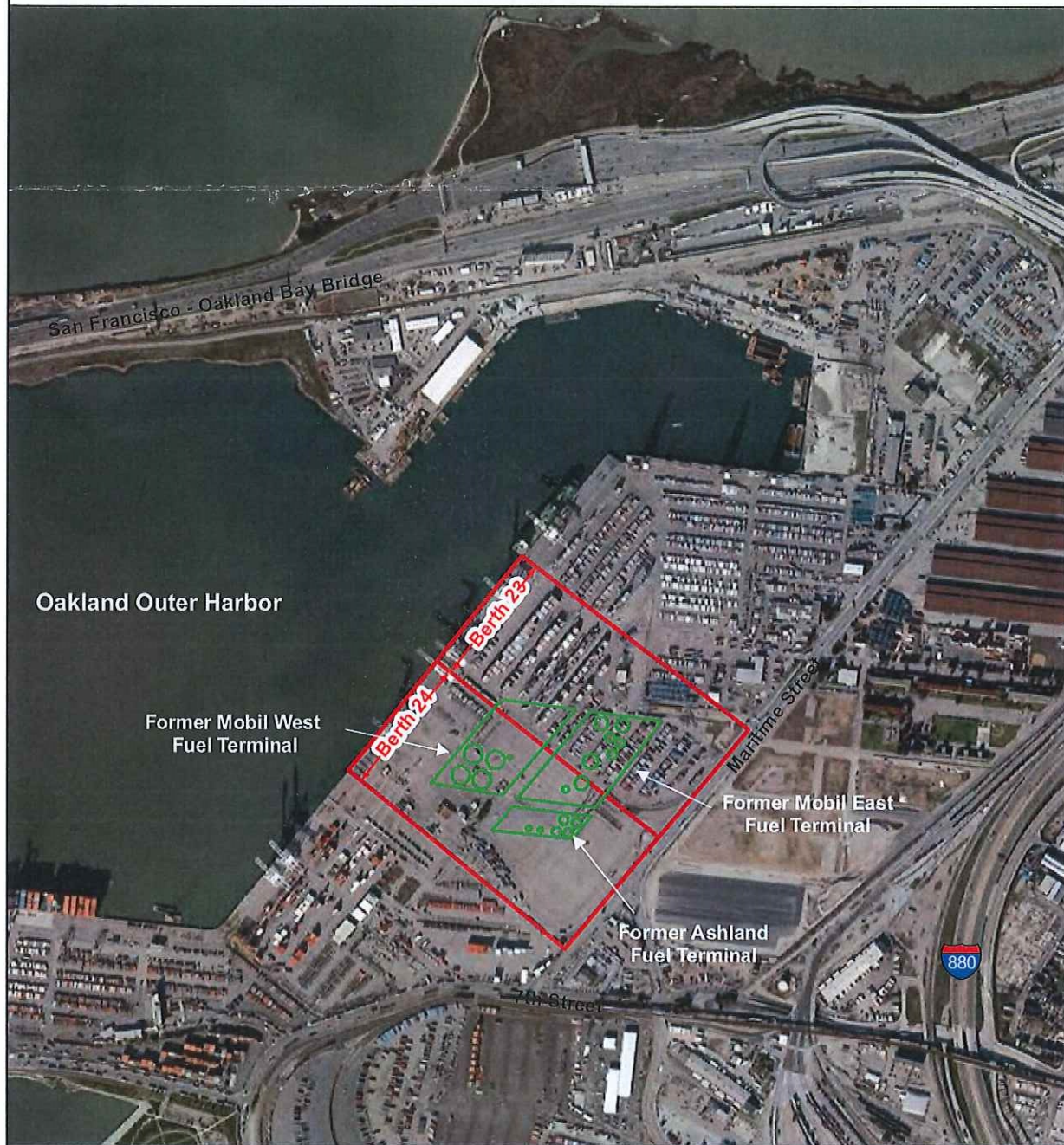


Exhibit A: Location of Former Mobil Oil Corporation & Ashland Oil Bulk Fuel Terminals



1"=1,000'

0 1,000 2,000 Feet

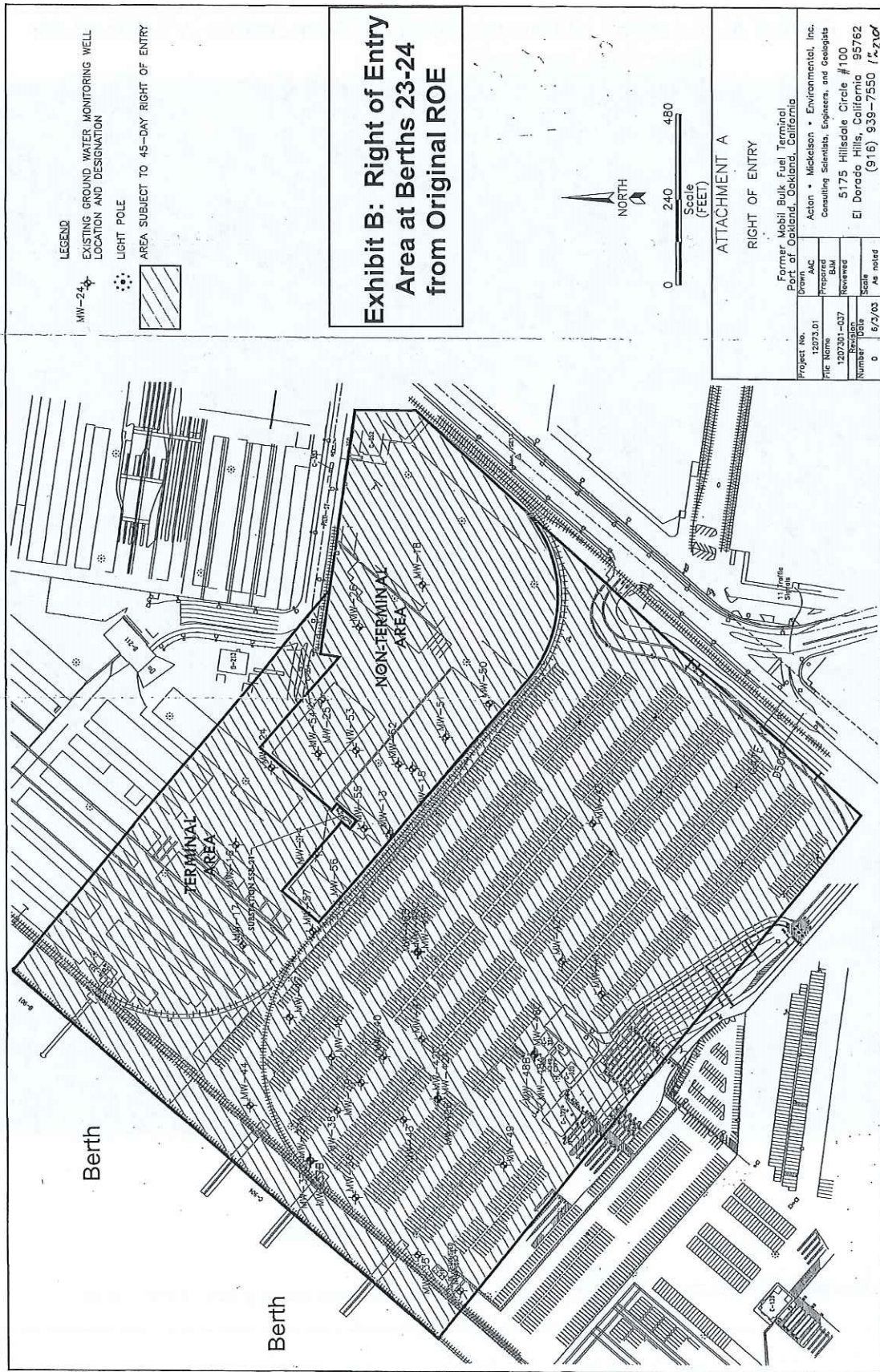
Legend



Former Fuel Terminals.



Footprint of former above ground storage tanks.



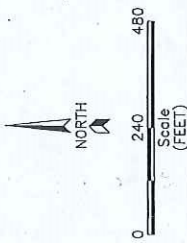
LEGEND

MW-24
EXISTING GROUND WATER MONITORING WELL
LOCATION AND DESIGNATION

LIGHT POLE

AREA SUBJECT TO 45-DAY RIGHT OF ENTRY

**Exhibit B: Right of Entry
Area at Berths 23-24
from Original ROE**



ATTACHMENT A			
RIGHT OF ENTRY			
Former Mobil Bulk Fuel Terminal Part of Oakland, Oakland, California			
Project No.	12073.01	Drawn	Acton • Mickelson • Environmental, Inc.
File Name	1207301-037	Prepared	Consulting Scientists, Engineers, and Geologists
Revision		Reviewed	5175 Hillside Circle #100
Number	0	Scale	El Dorado Hills, California 95762
Date	6/2/00	As noted	(916) 939-7550 1/2"=20'